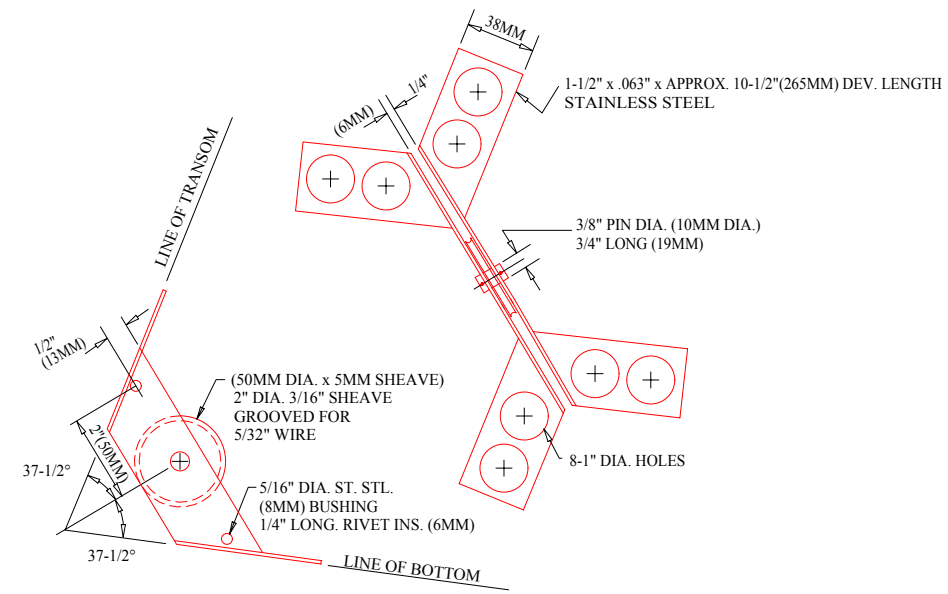
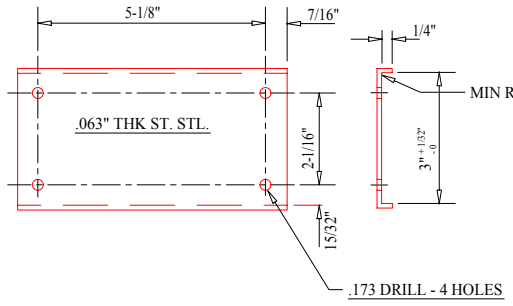


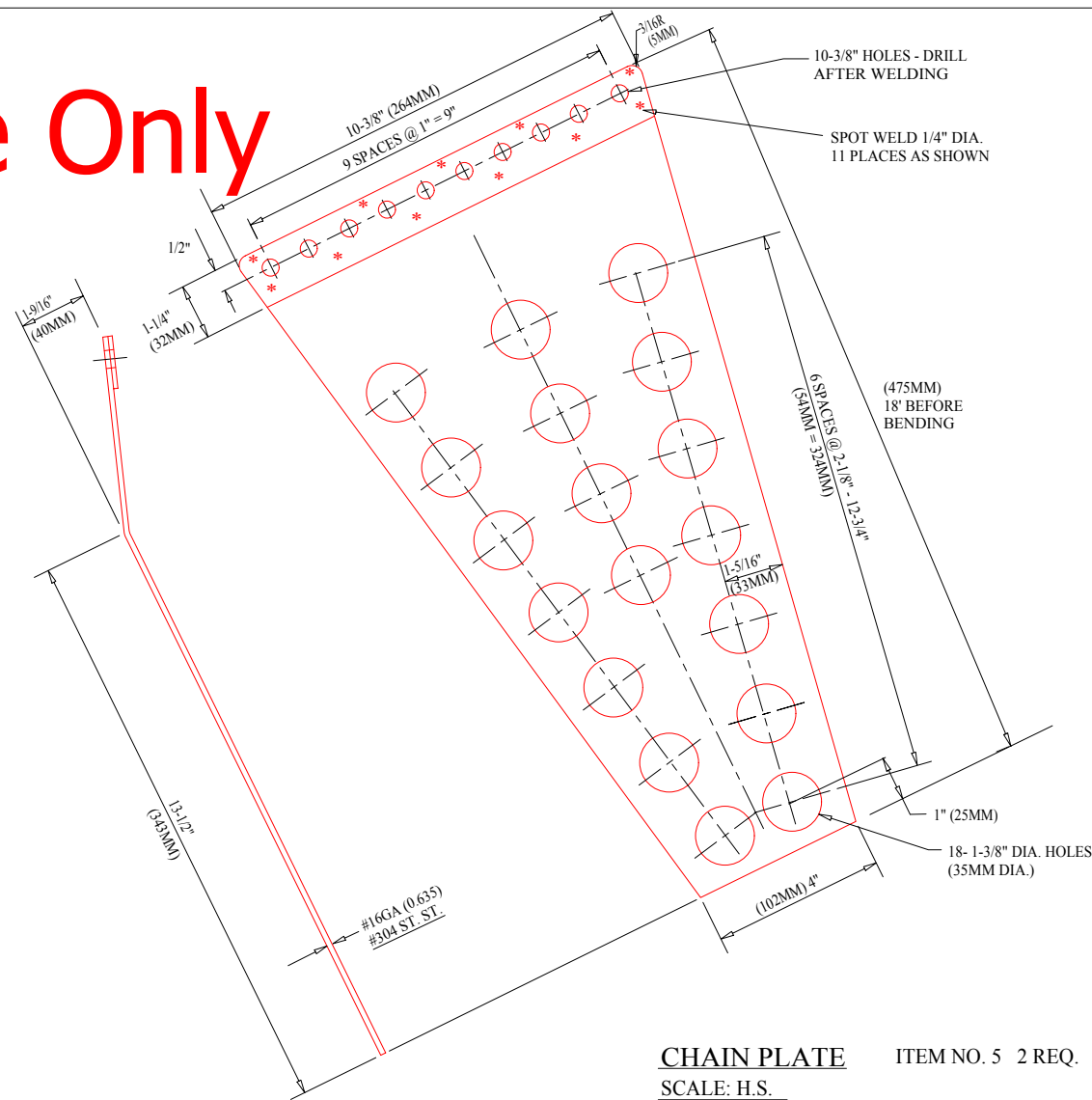
These Drawings are Provided for Reference Only



BACKSTAY FITTING ITEM NO. 24 1 REQ.
SCALE: HALF SCALE



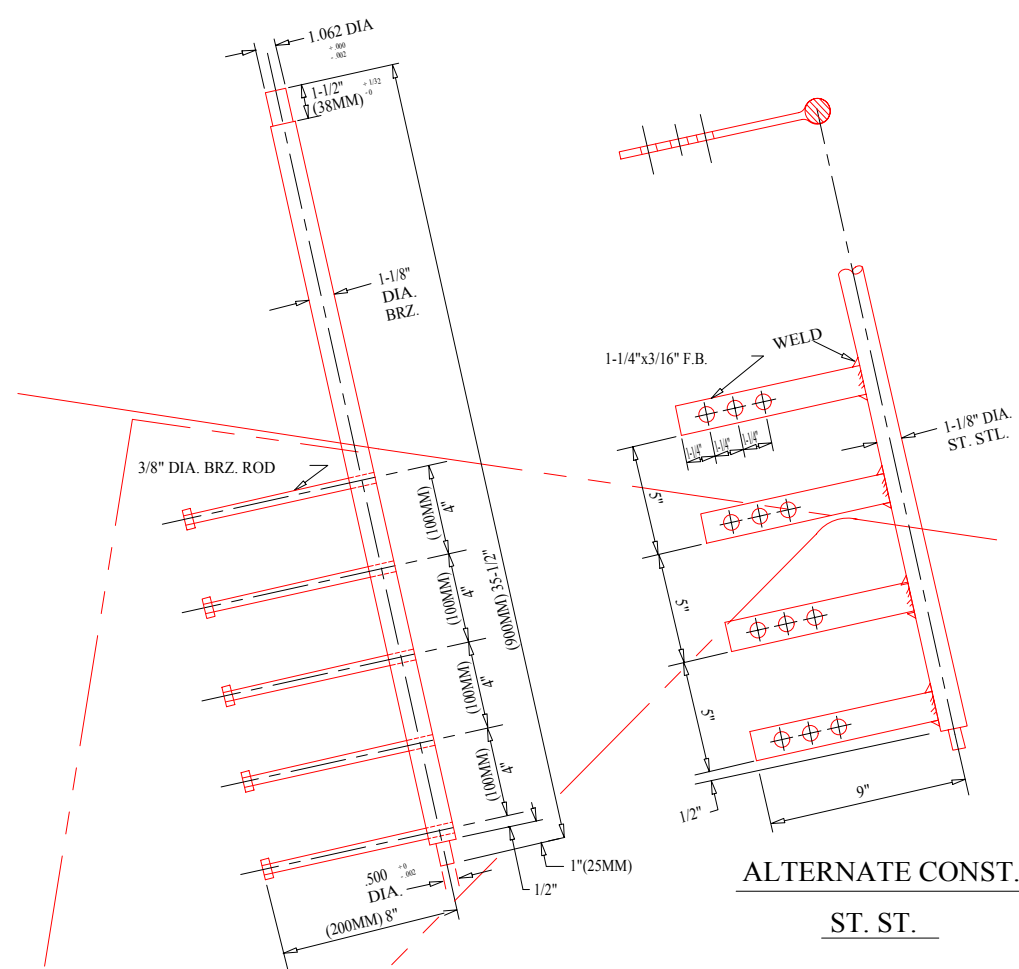
MAST BUTT SHOE ITEM NO. 17 1 REQ.
SCALE: 6\"/>



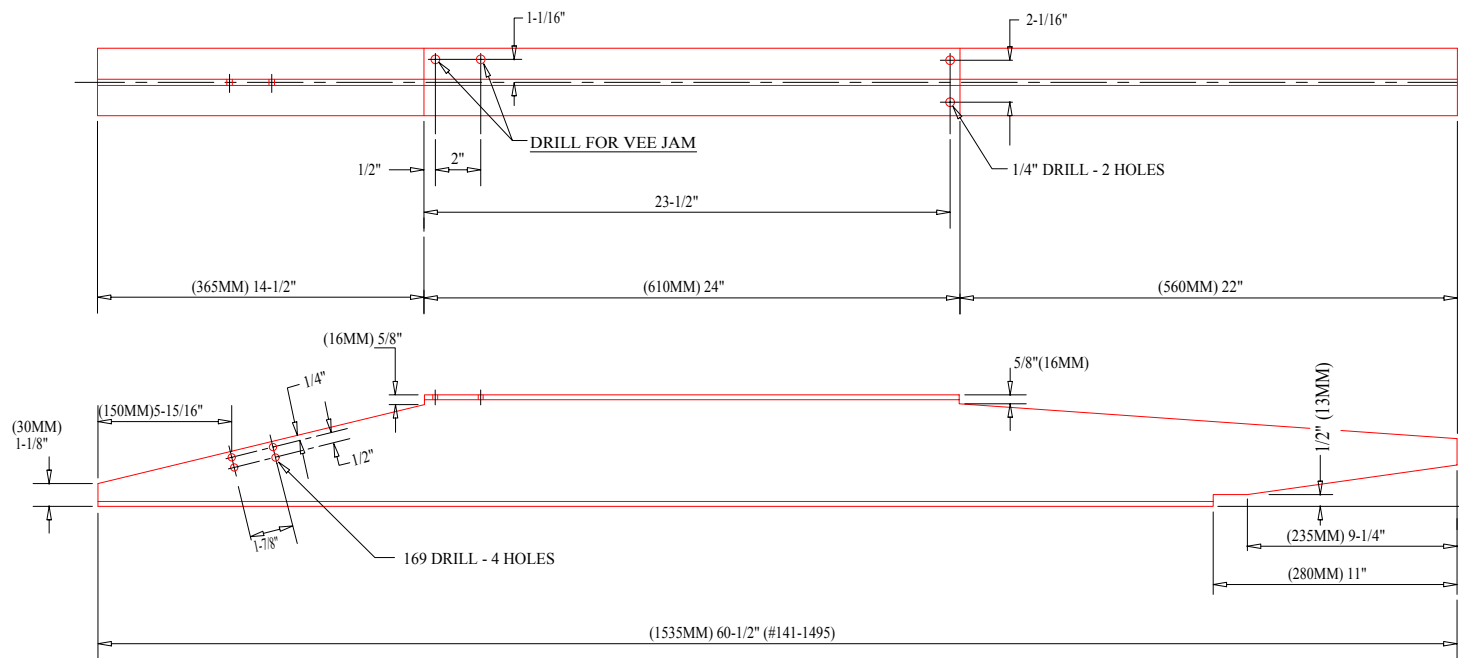
CHAIN PLATE ITEM NO. 5 2 REQ.
SCALE: H.S.

ITEM NO.	NAME	OG NO.	VENDORS	REMARKS
1	BOW FITTING	SHOWN		
2	BOW COLLAR			NOT SHOWN
3	BOW CHOCKS	8-19	OR 4-1/2\"/>	
4	JIB SHEET CLEAT		SCHAEFER CX - 813-4*	
5	CHAIN PLATE	SHOWN		
6	CHAIN COLLAR	SK-3MB-17	SCHAEFER	NOT SHOWN
7	SPLIT CLEVIS & BASE PLATE		AMER. CHAIN	NOT SHOWN
8	THROUGH DECK FERRULE (5)			NOT SHOWN
9	CAM JAMS (5)		ROLEDEGE NO. 943	NOT SHOWN
10	SAMPSON POST BASE	S-20		NOT SHOWN
11	MAIN SHEET LEAD	S-17		NOT SHOWN
12	JIB SHEET LEADS		FICO NOS. 153C, 248A, 523	NOT SHOWN
13	JIB SHEET WINCH		SEABOARD NO. 7200	NOT SHOWN
14	SPIN WINCHES (2)		DEABOARD NO. 7210	NOT SHOWN
15	SPIN CAMS (2)		SEABOARD NO. 1202	NOT SHOWN
16	MAST STEP	SHOWN		
17	MAST BUTT SHOE	SHOWN		
18	LIFTING EYE	E-4		NOT SHOWN
19	TILLER FITTING	S-6		NOT SHOWN
20	RUDDER STOCK	SHOWN		
21	SKEG SHOE	E-2		NOT SHOWN
22	MAIN TRAVELER		SEABOARD NO. 4521 OR FICO NO. 5556006	NOT SHOWN
23	MAIN TRAVELER CONTROL		SEABOARD NO. 1347 OR FICO NO. 728	NOT SHOWN
24	BACK STAY FITTING	SHOWN		
25	BACKSTAY TACKLE		FICO NOS. 98, 102 SHAEFER TANG	NOT SHOWN
26	BACKSTAY COLLAR			NOT SHOWN
27	MAIN SHEET BLOCKS			NOT SHOWN
28	GOOSENECK	S-25	FICO NO. 703	NOT SHOWN
29	OUT HAUL		MARINER SPECIAL	NOT SHOWN
30	TURNBUCKLES		MERRIMAN NO. 377-38*	NOT SHOWN
31	OPTIONAL F.A. SEATS	SK-3MB-16		NOT SHOWN

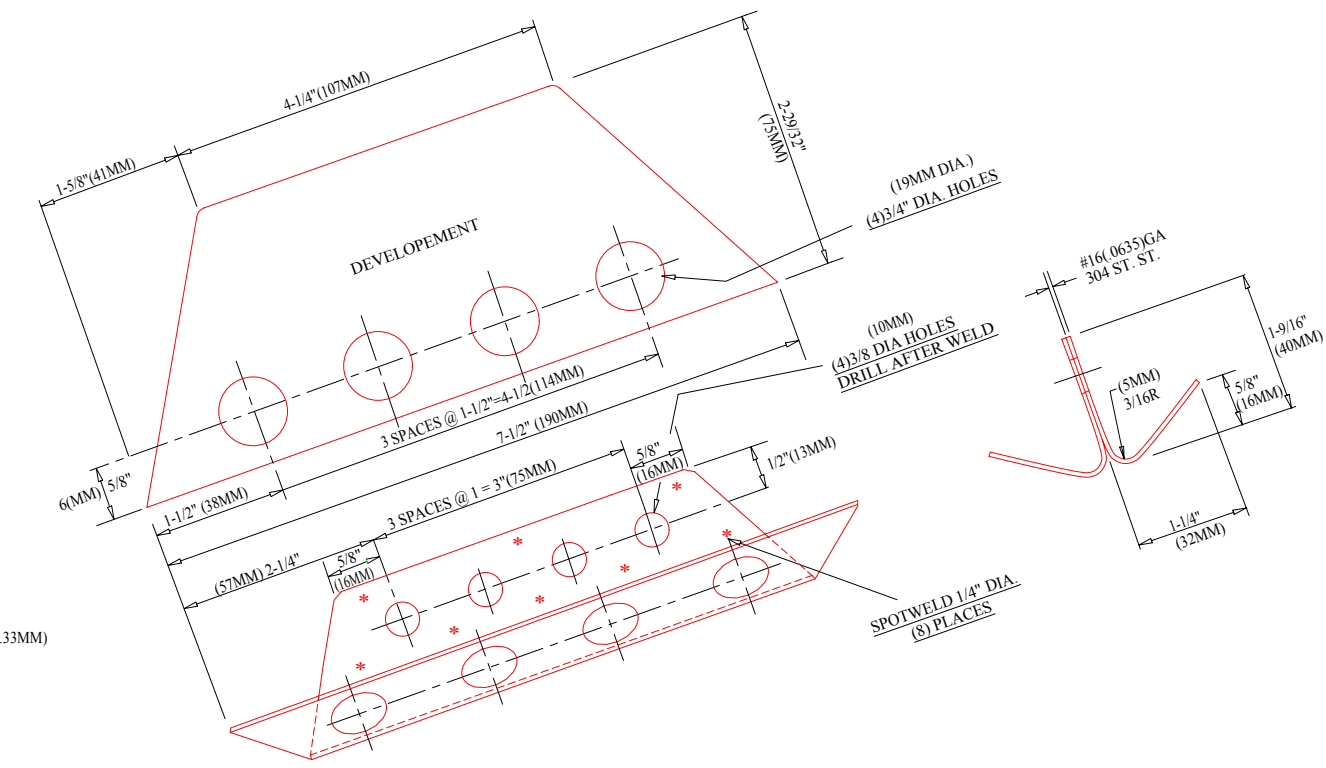
NOTE: 1. ITEM NOS. REFER TO CONSTRUCTION DWG. NO. 3MKB-10-F
2. ITEMS-MAKE & TYPE INDICATED FOR GUIDANCE ONLY.
EQUIVILANT ACCEPTABLE



RUDDER STOCK ITEM NO. 20 1 REQ.
SCALE: 3\"/>



MAST STEP ITEM NO. 16 1 REQ.
SCALE: 3\"/>



BOW FITTING ITEM NO. 1 1 REQ.
SCALE: FULL SCALE

These Drawings are Provided for Reference Only

ETCHELLS PLANS, SCANNED BY PETER SMITH AT HINKLEY'S SOUTHWEST HARBOR, ME IN 1994. WERE PROOFED AND TRANSFERRED TO DISK BY ERIC GRAVES, CROSS POINT YACHTS, INC. EDGE COMB, ME IN 2001

DESIGNER:
E. W. ETCHELLS
ROUTE 5, BOX 486
EASTON, MD 21601 U.S.A.

CONTROLLING AUTHORITIES:
INTERNATIONAL E-22 CLASS ASSOCIATION
BOX 534, WALL STREET STAION
NEW YORK, NY 10288 U.S.A.
INTERNATIONAL YACHT RACING UNION
60 KNIGHTSBRIDGE
LONDON SW1 7XJ ENGLAND

INTERNATIONAL E-22 CLASS
DWG. NO. 3MKB-15F
FITTINGS DETAIL
SCALE: 1:1, 1:5, 1:10, 2:1
DATE: JAN. 16, 1981 DRAWN/APPROVED: TSL/CSO SHEET 1 OF 3