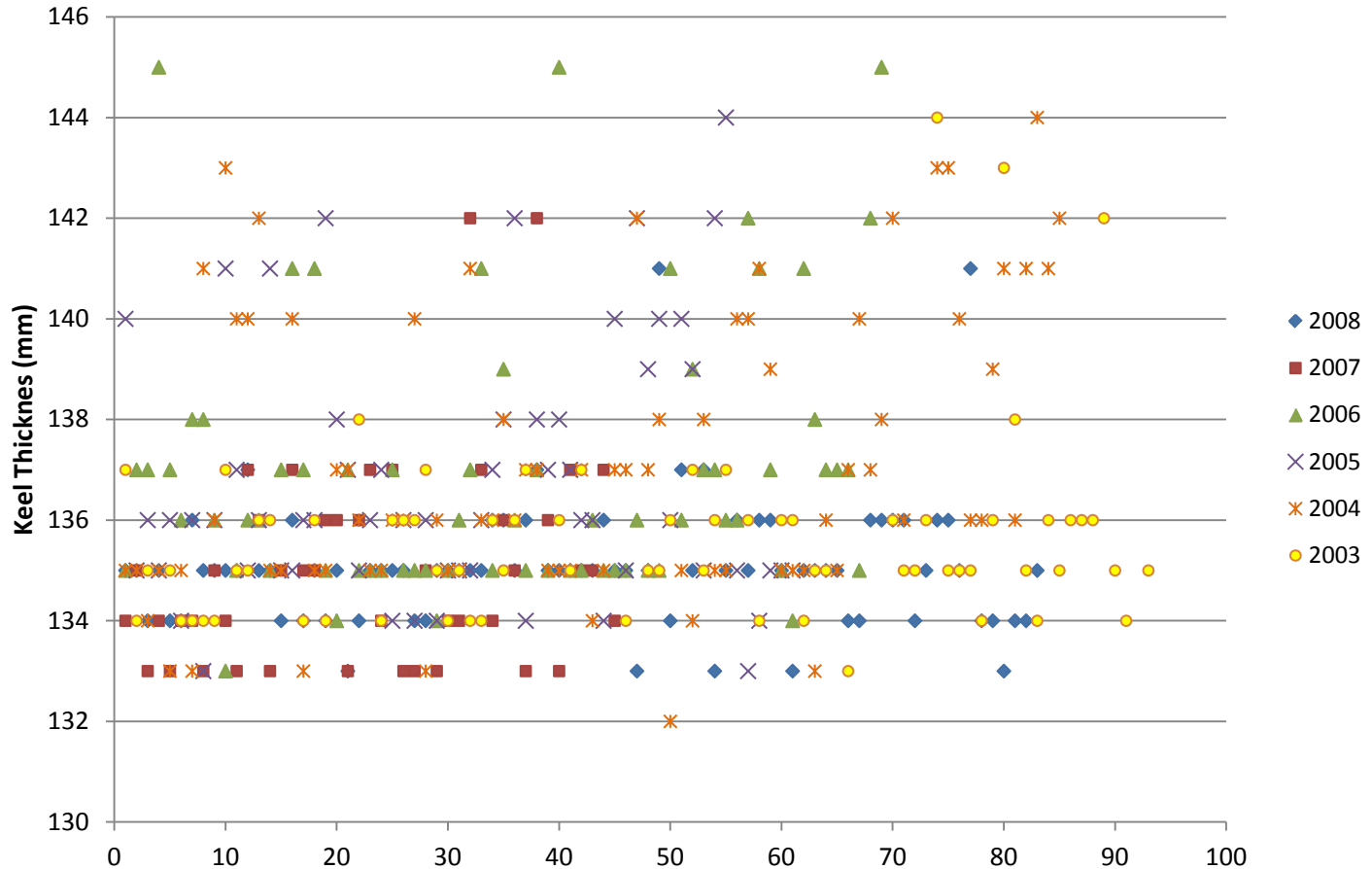


Comparison of Worlds Finishes to:

- Keel Thickness
- Hull#
- Keel Weight

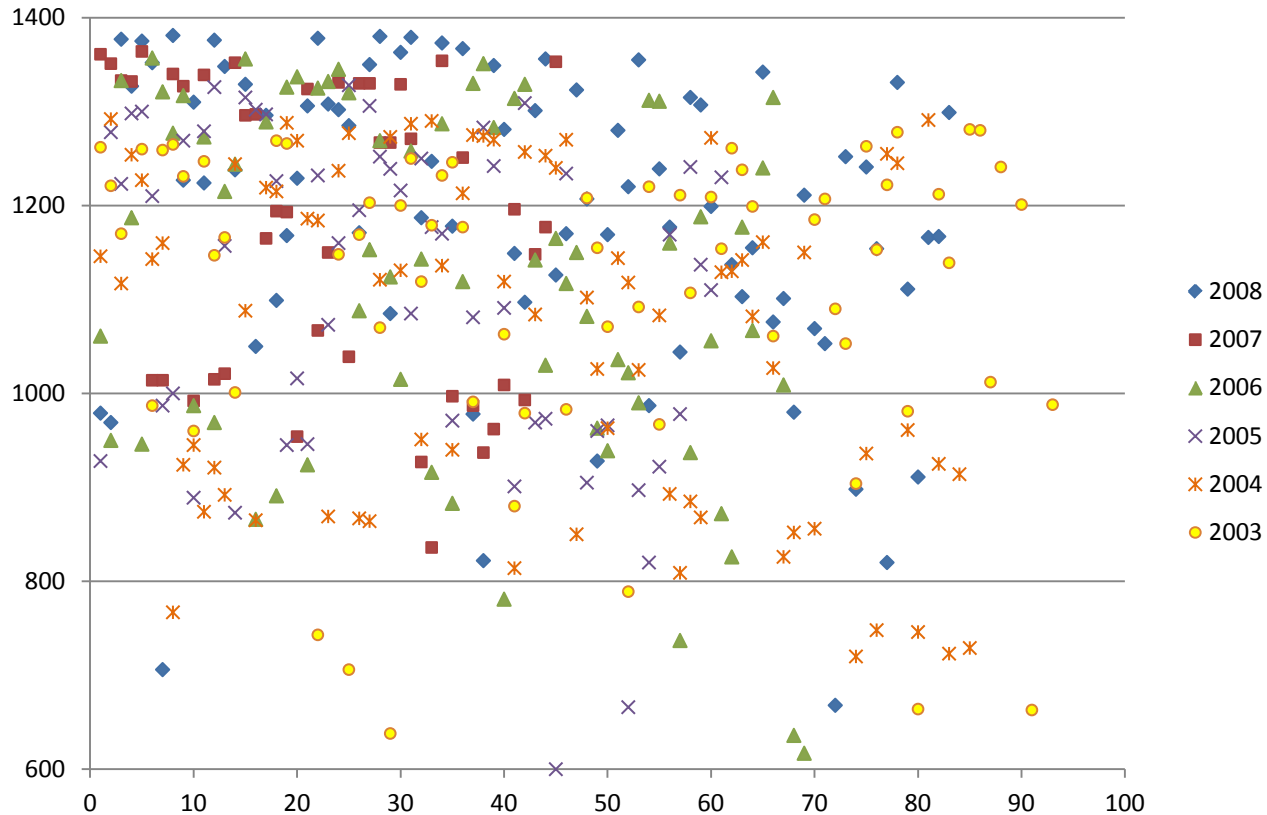
- The data has been collected from certificates and measurements taken by Denis Haywood at World Championships.
- All data is graphed “X” vs. Worlds Finish Position. This graphing format will point out any clear trends if they exist.
- If Keel Weight, Thickness or Hull number has a significant impact on finish position then a clear trend or cloud of data should easily be visible going from the upper left to lower right of each graph. No such trends are seen.

Keel Thickness vs. Worlds Finish Position



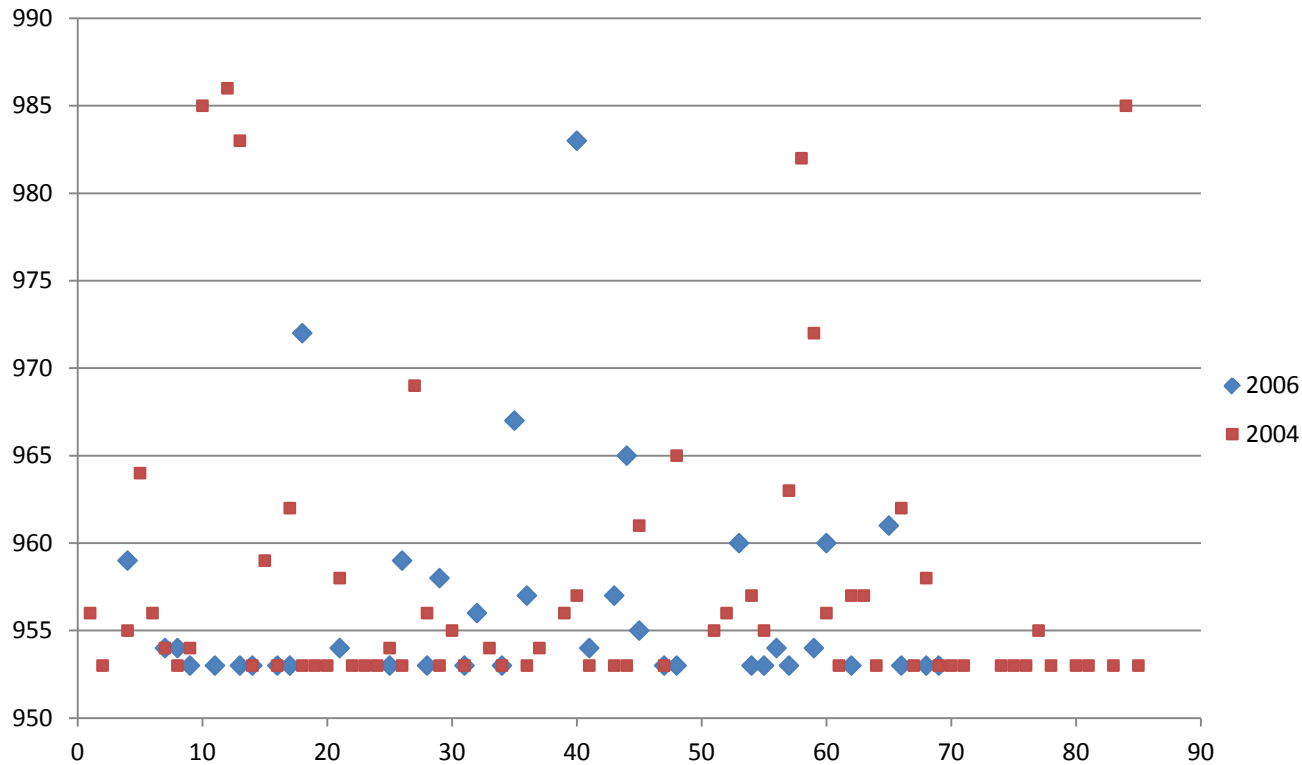
- Thick or Keels “Considered Heavy” are NOT Dominating World Championships
- There are No Statistical Anomalies that Imply these are “Cheater” Boats
- Thick Keels are Distributed over all Finish Positions

Hull # vs Worlds Finish Position



- There is No Data Supporting the Claim that One Series of Hull Numbers Wins More Worlds than Any Other
- Typically Newer boats Win more

Keel Weight vs. Worlds Finish Position



- Based on Limited Samples there is No data to support Heavier Keels Dominating World Championships
- The Data Suggests that On Average Keels Over 965 Do Not get in the Top 10 Very Often