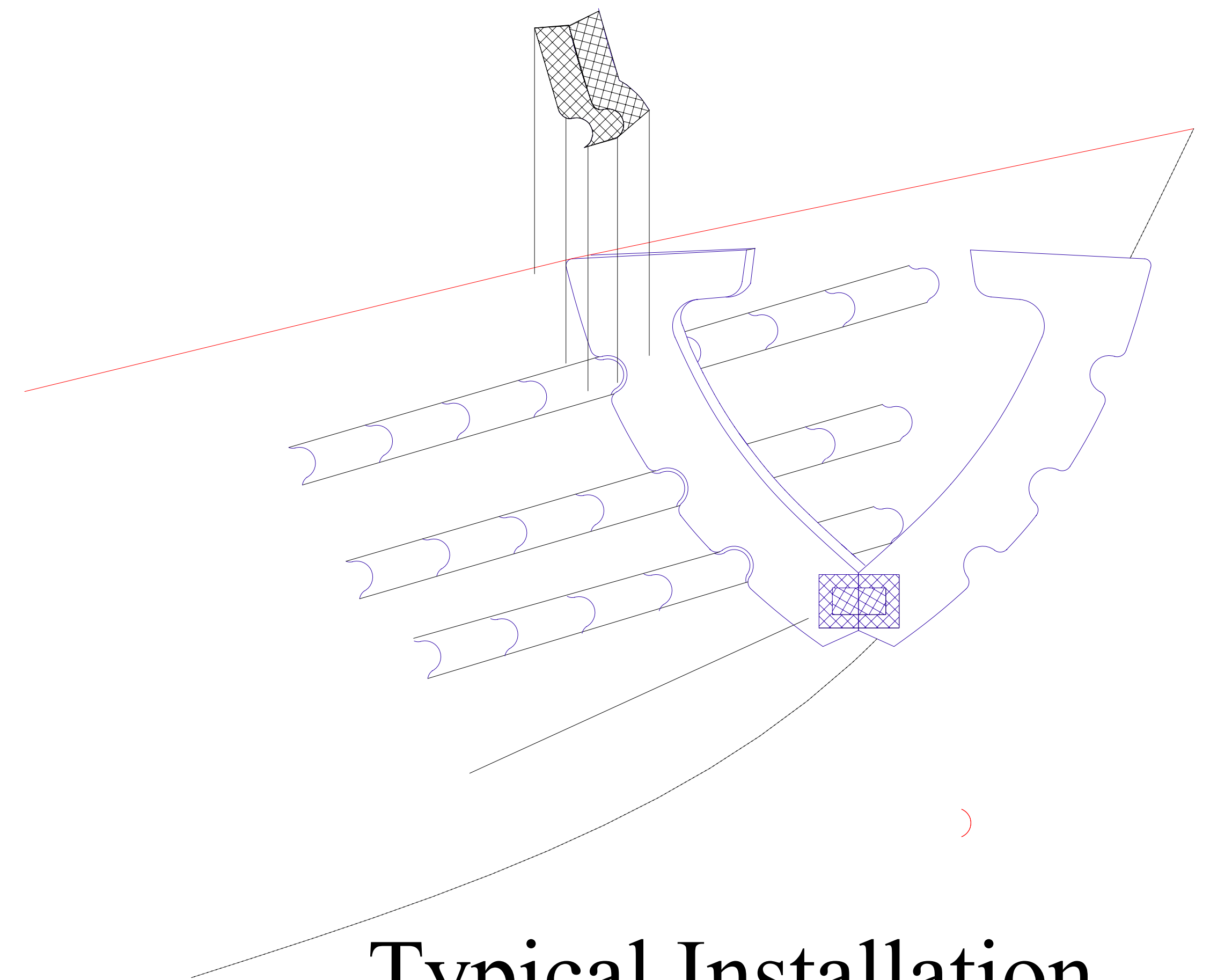
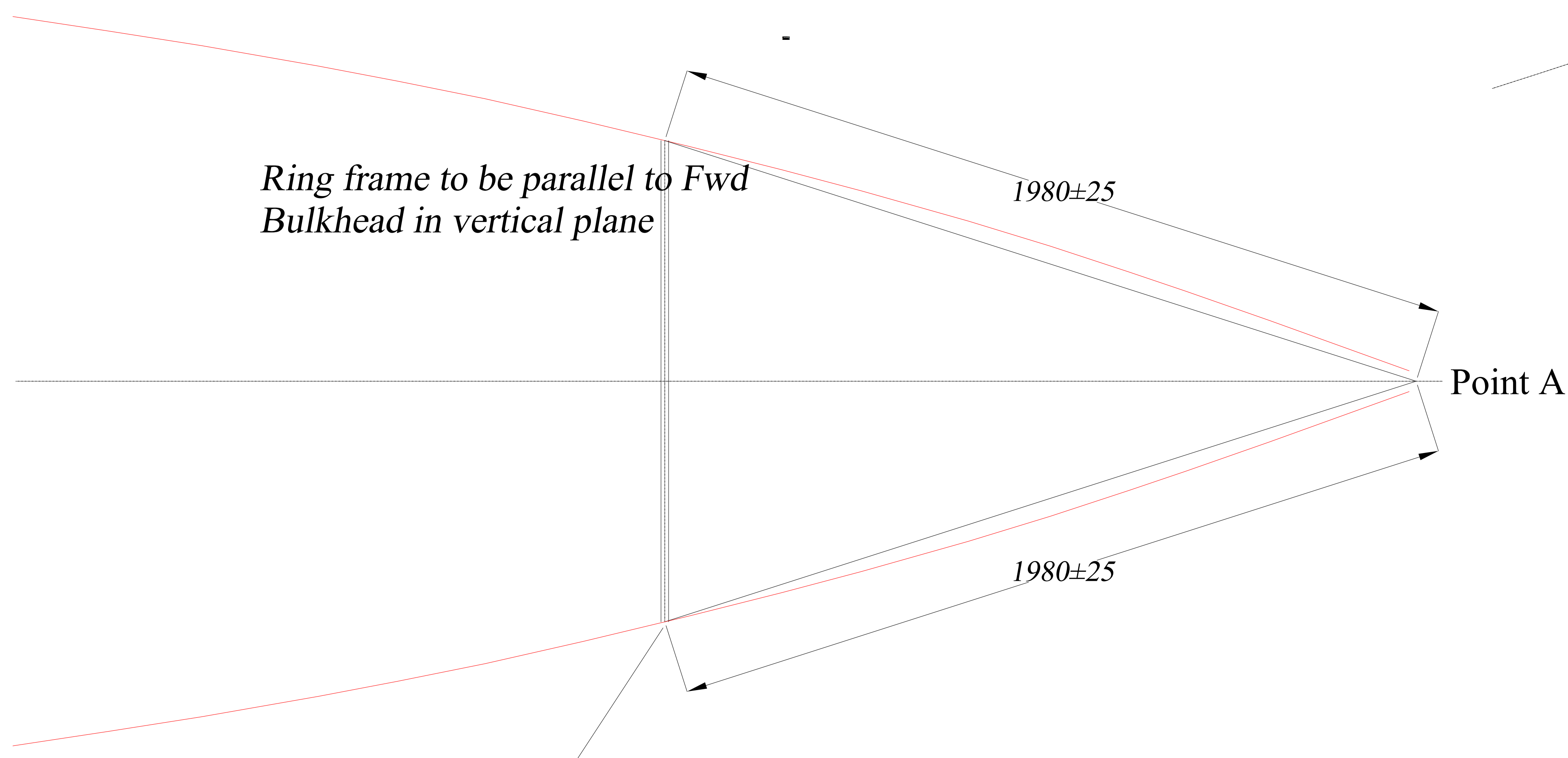


International Etchells Class Drawing
Bow_Bulkhed_Installation_2007
26 Sept 2007
Scale= None



Typical Installation
and Tabbing

Placement of Bulkhead



*Ring frame to be parallel to Fwd
Bulkhead in vertical plane*

1980±25

Point A

1980±25

*For retrofit locator , drill small hole in sheer at
this point. Fill with pinpoint of sealant
afterword*

D.Oakie