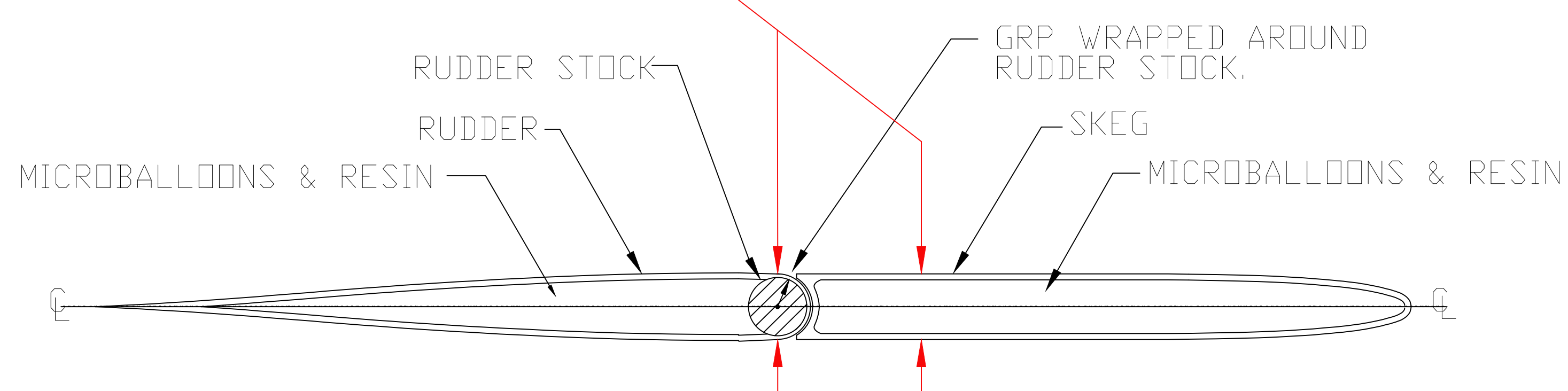
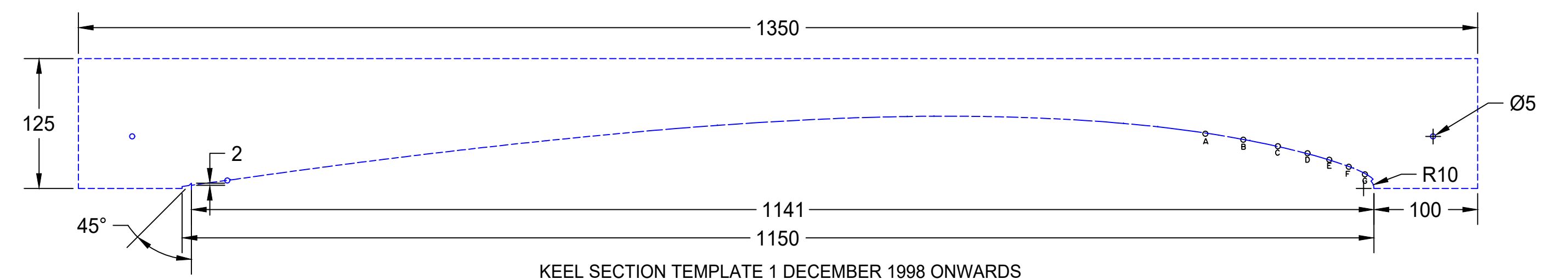


RUDDER/ SKEG PROFILE

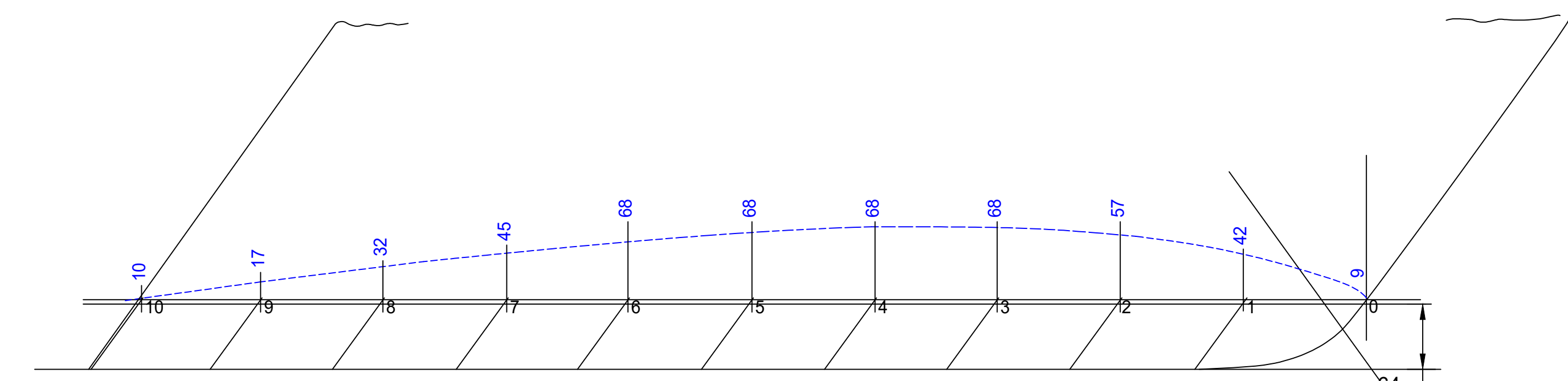
MAXIMUM THICKNESS OF RUDDER AND SKEG 35±3
SEE RUDDER/SKEG PROFILE ABOVE (#42 & #45)



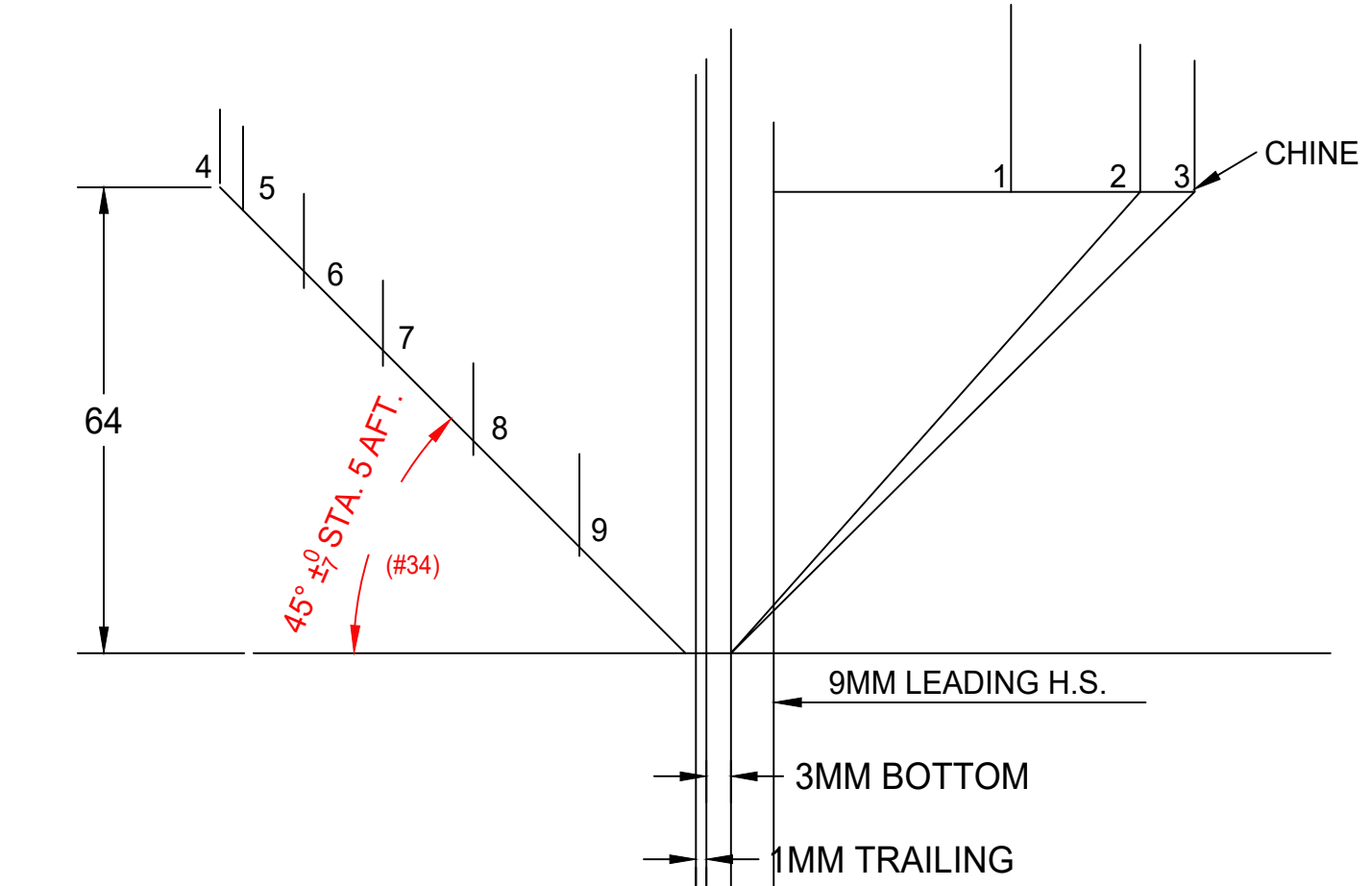
SECTION J-J (RUDDER/SKEG)
SECTION LINE SHOWN ON PLAN 10G



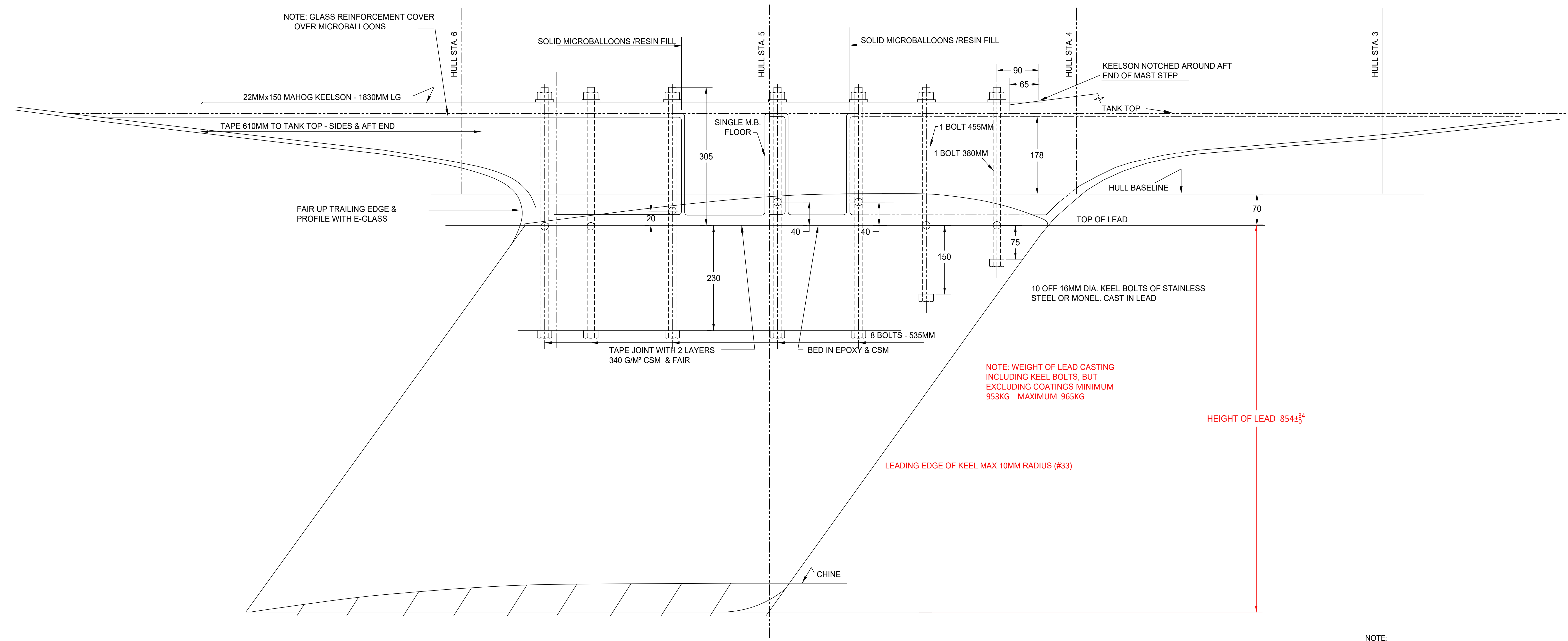
CHORD LENGTH MEASURED ALONG TEMPLATE; MIN 1141MM, MAX 1150MM (#31)
DIFFERENCE BETWEEN MIN AND MAX CHORD DIMENSIONS 5MM (#32)
SURFACE OF KEEL, INCLUDING COATINGS, TO TEMPLATE; MIN 0MM, MAX 3MM



FOIL SECTION 10 STATIONS @ 114.3MM PRE 1 DECEMBER 1998 ONLY
DIMENSIONS SHOWN FOR ILLUSTRATION ONLY; USE PRE 1 DECEMBER 98 TEMPLATE.



BOTTOM VEE SECTIONS 10 STATIONS



KEEL PROFILE AND BOLT ARRANGEMENT

NOTE: WEIGHT OF LEAD CASTING INCLUDING KEEL BOLTS, BUT EXCLUDING COATINGS MINIMUM 953KG MAXIMUM 965KG

HEIGHT OF LEAD 854±3

LEADING EDGE OF KEEL MAX 10MM RADIUS (#33)

NOTE: GLASS REINFORCEMENT COVER OVER MICROBALLOONS

NOTE:
1. ALL DIMENSIONS ARE GIVEN IN MILLIMETRES.
2. NUMBERS IN BRACKETS PROCEEDED BY # E.G. (#23)
REFER TO THE ITEM ON THE MEASUREMENT FORM

CHANGES ARE NOT TO BE MADE TO THE INFORMATION PROVIDED BY THE CONSTRUCTOR SPECIFICATION WITHOUT THE WRITTEN CONSENT OF INTERNATIONAL ETCHHELLS CLASS. IT IS THE BUILDERS RESPONSIBILITY TO CHECK ALL DIMENSIONS & DRAWING CONTENTS & TO ACHIEVE ETCHHELLS INTERNATIONAL CLASS OF ANY CHANGES PRIOR TO COMMENCEMENT OF CONSTRUCTION.

CONTROLLING AUTHORITIES:
International Etchells Class Association
3388 Faber Street
San Diego, CA 92106 USA
Phone: +1 619-940-2558
World Sailing
PO Box 95, 24 Lord Street, Douglas,
Isle of Man, IM99 1HP United Kingdom

KEEL DRAWING
INTERNATIONAL ETCHHELLS CLASS

CLIENT: International Etchells Class Association
PROJECT: P131
SCALE: AS DRAWN @ A0
SHEET: 1 OF 1

WHITEHOUSE
YACHT DESIGN
info@gywhitehouse.com
9 Marina Walk, Cowes
Isle of Wight, PO31 7JX United Kingdom

REV	DATE	DESCRIPTION	BY	CHK	APP
E	21/03/2022	SNAGGING LIST 2103	GW	RR	-
D	17/03/2022	SNAGGING LIST 1003	GW	RR	-
C	08/03/2022	UPDATE OF FILE REFERENCES	GW	RR	-
B	24/02/2022	LEADING EDGE RADIIUS KEEL ADDED	GW	RR	-
A	09/02/2022	CHECK LIST 3.2.2 & SPELL CHECK	GW	-	-
PL	04/02/2022	CHECK LIST 3.2.2	GW	-	-
P3	28/01/2022	GA FOR COMMENT	GW	-	-
P2	29/12/2021	GA FOR COMMENT	GW	-	-
P1	18/01/2021	GA FOR COMMENT	GW	-	-
REV	DATE	REVISION DETAILS	OWN	CHK	APP